

How to add video from IP Camera into DVR

Go to "Configure"

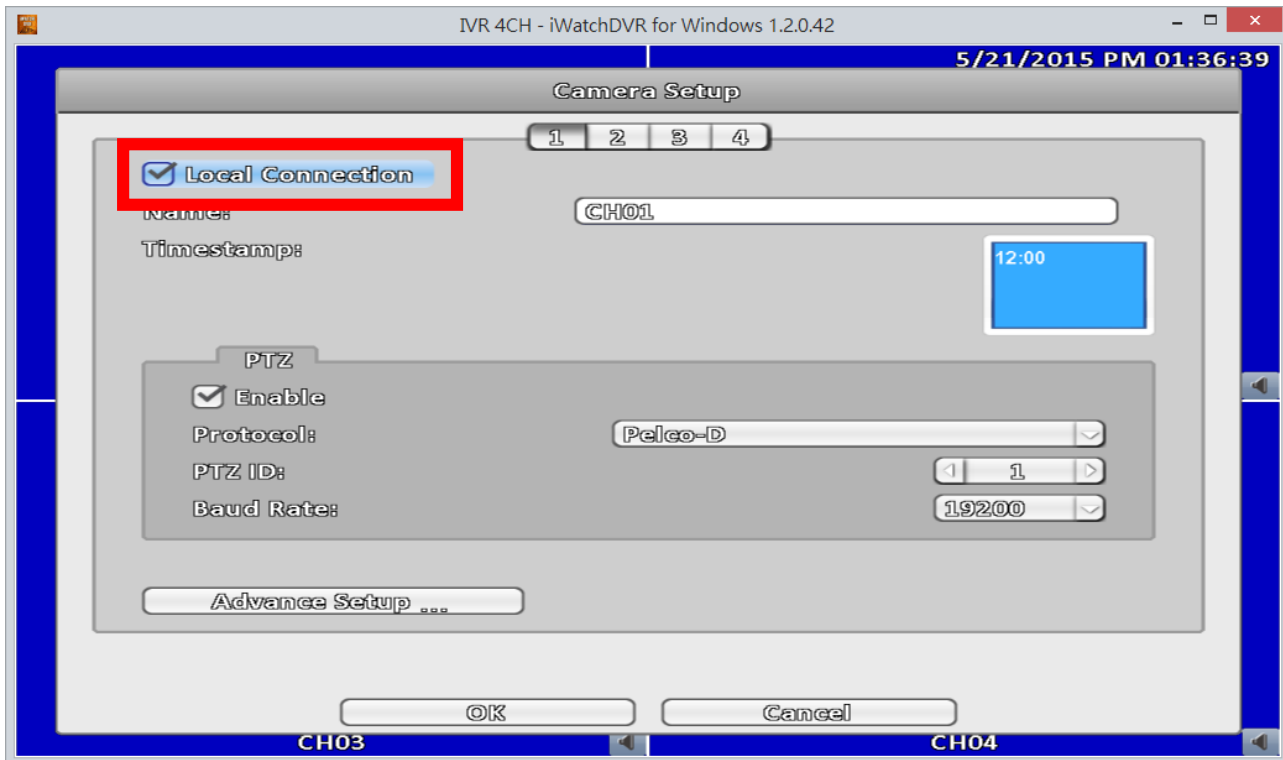


Go to "Camera Setup"

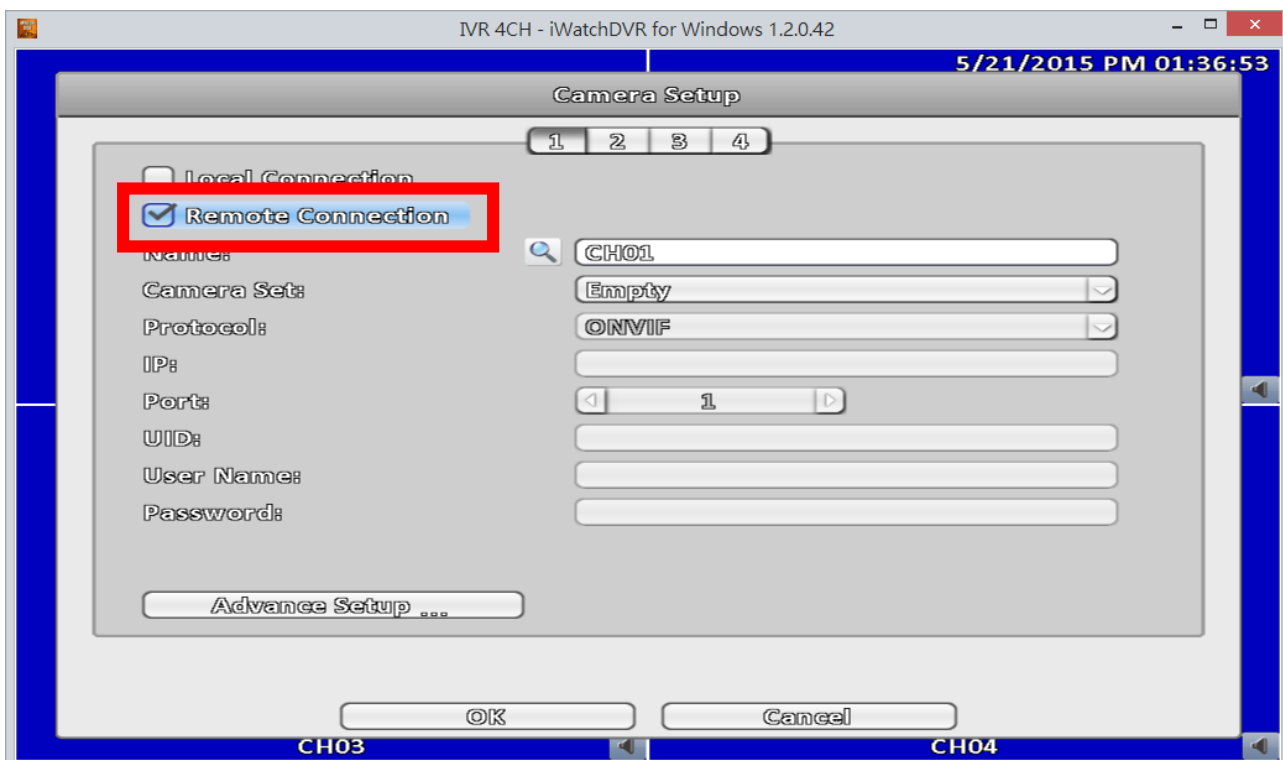


Uncheck "Local Connection".

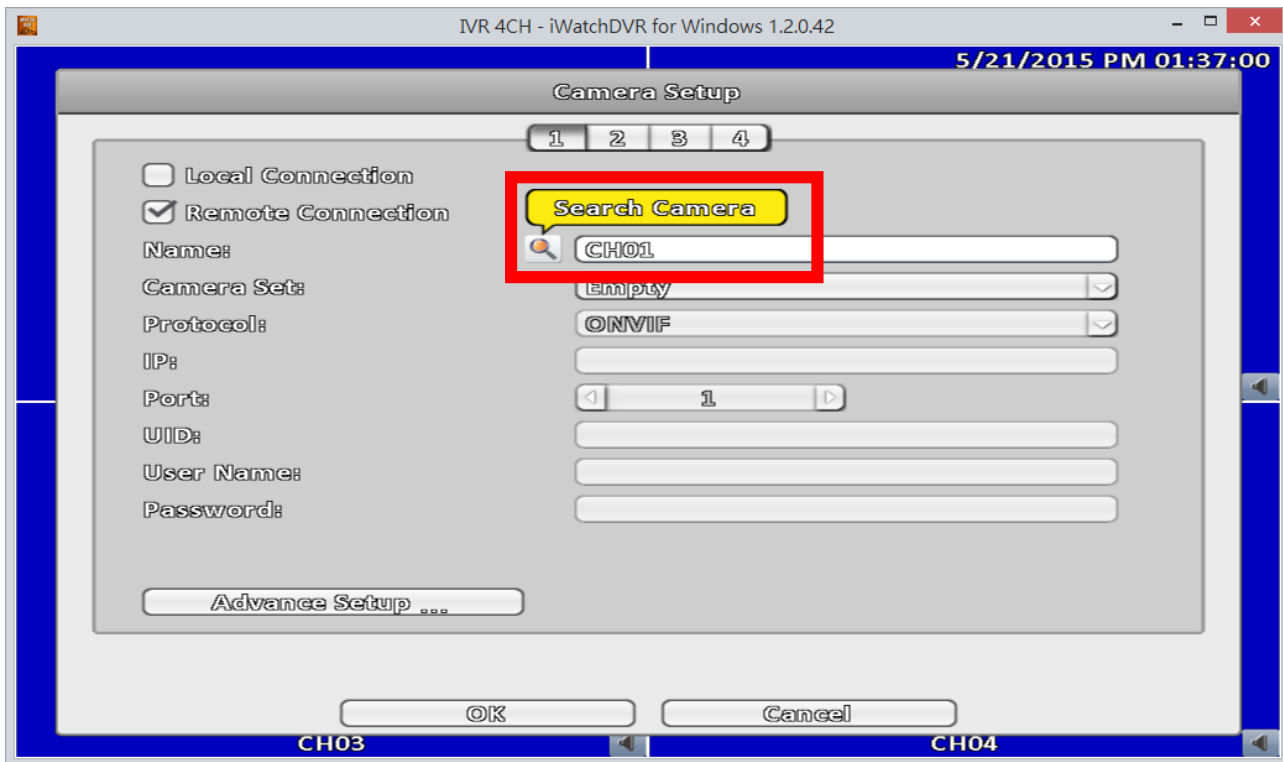
(Each channel is set separately. This example is taken from CH1.)



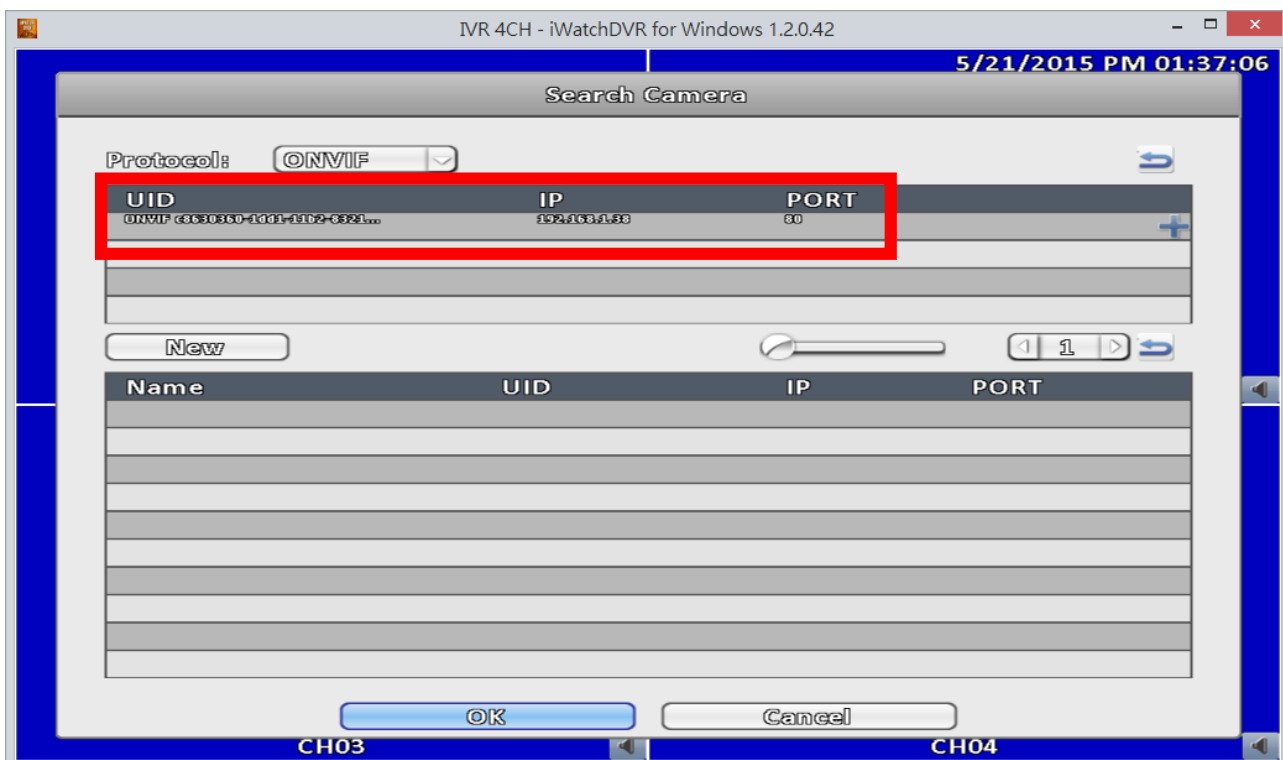
Go to "Remote Connection"



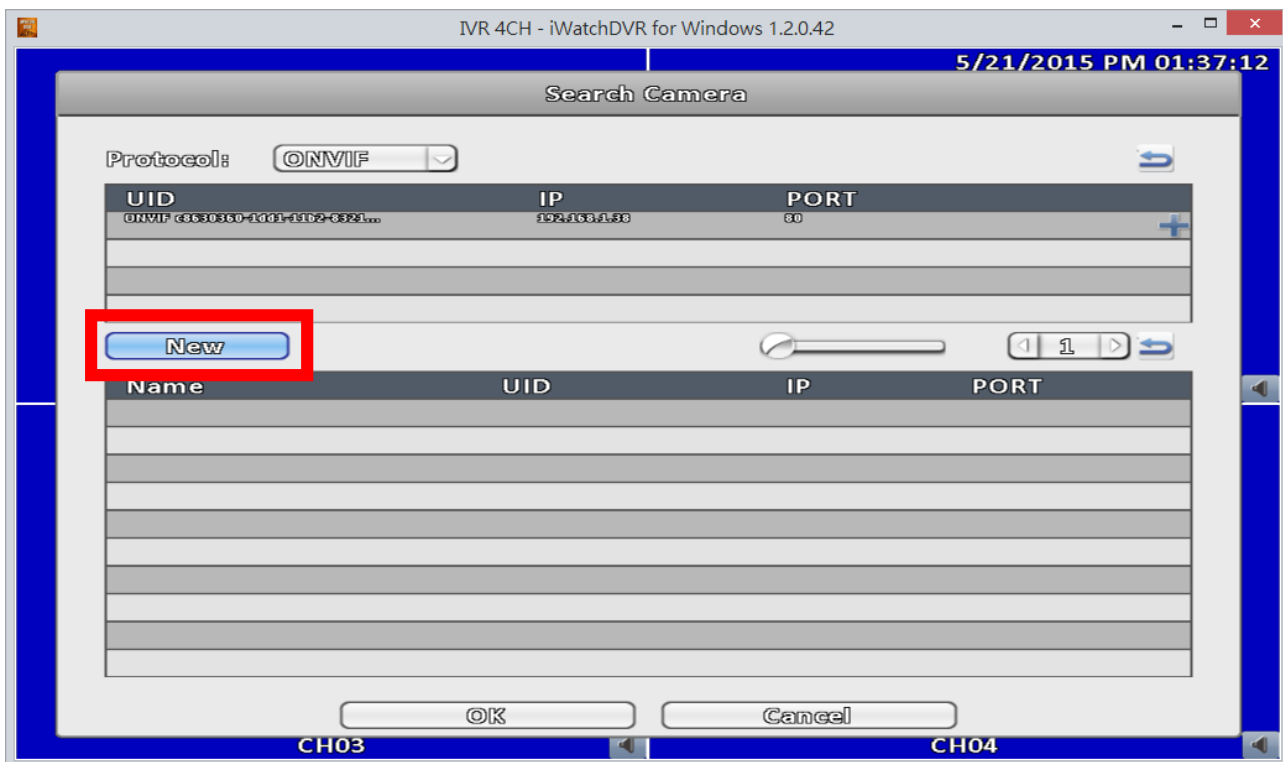
Click "Search Camera"



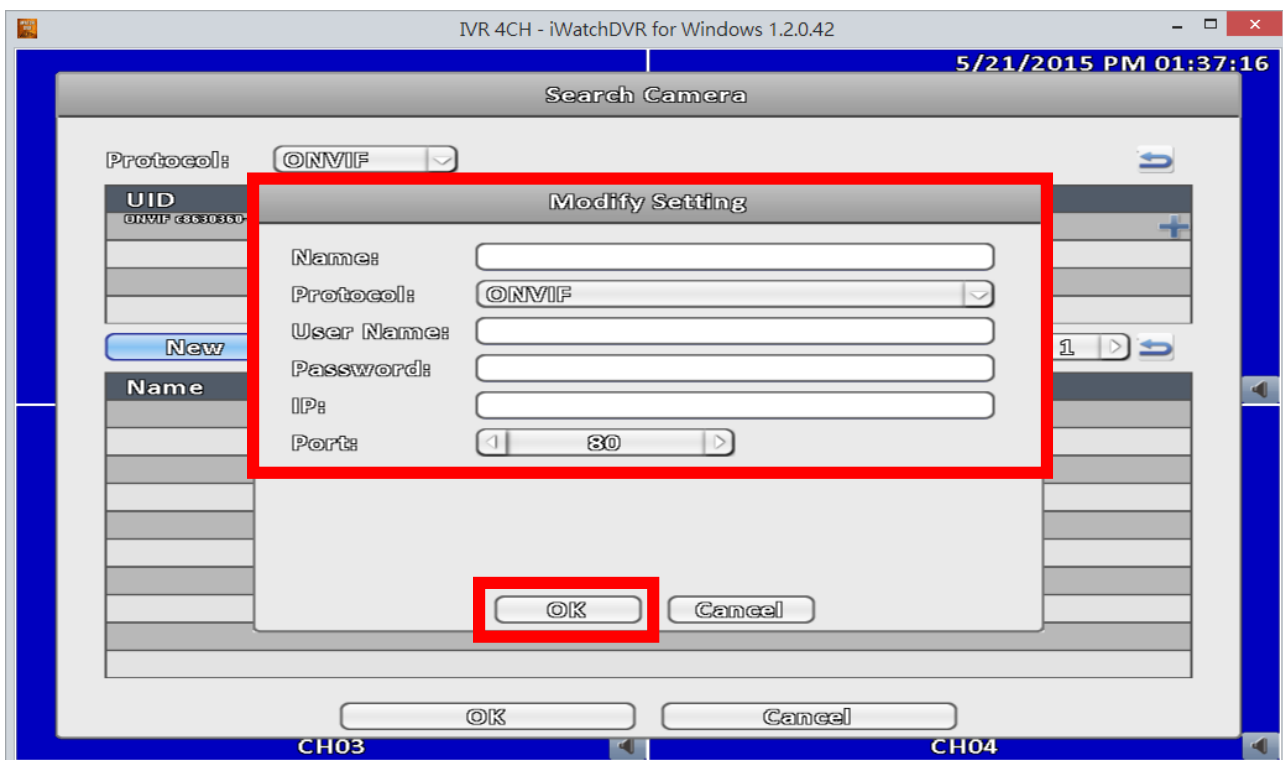
If the IP Camera is in the same network, its information will be shown automatically.



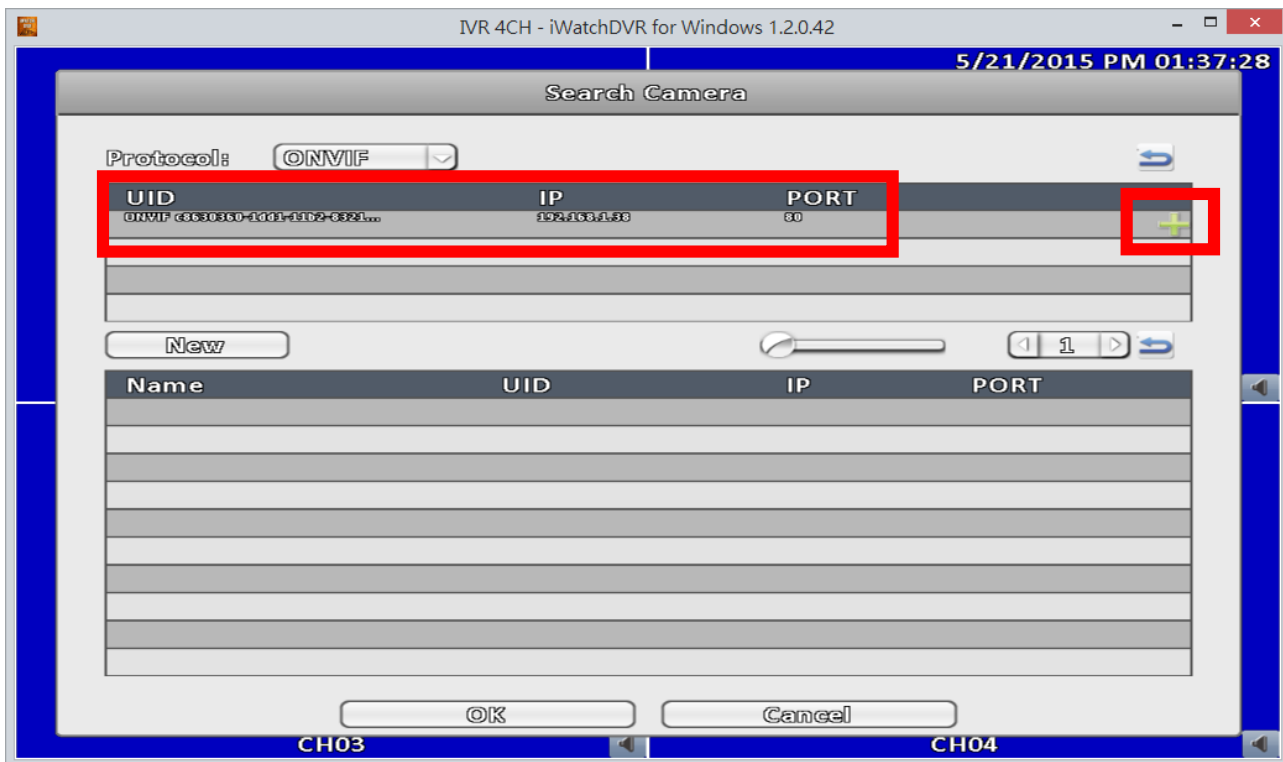
Or click “New” to add another IP Camera.



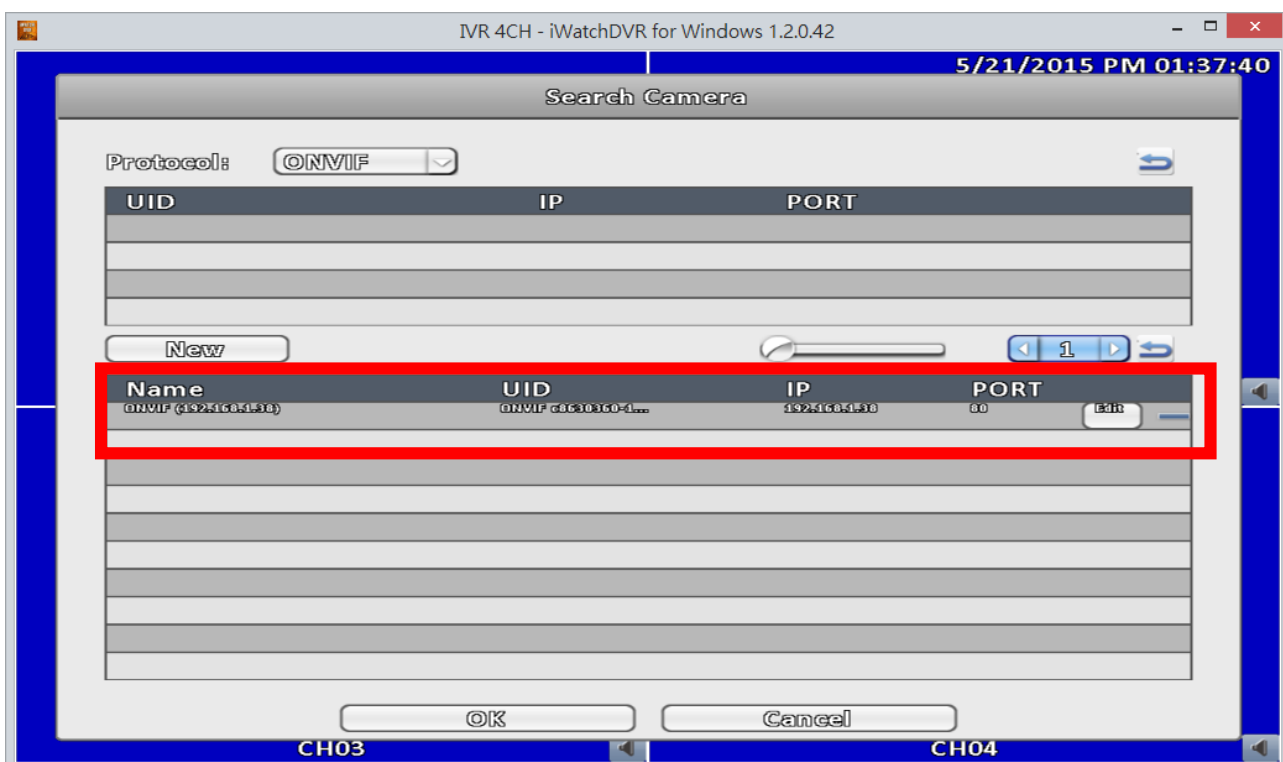
Enter necessary information manually.
When completed, click “OK” to save the setting.



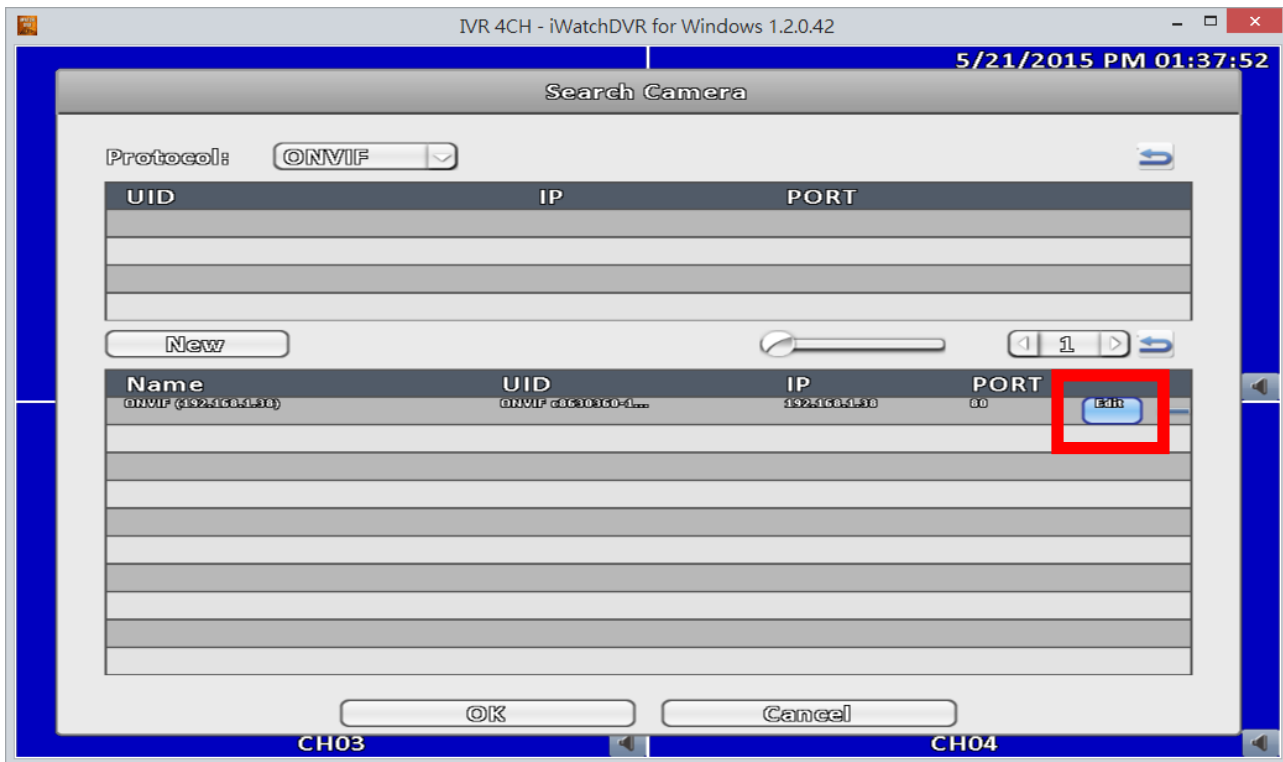
If the IP Camera is in the same network, its information will be shown automatically. Click "+" to add.



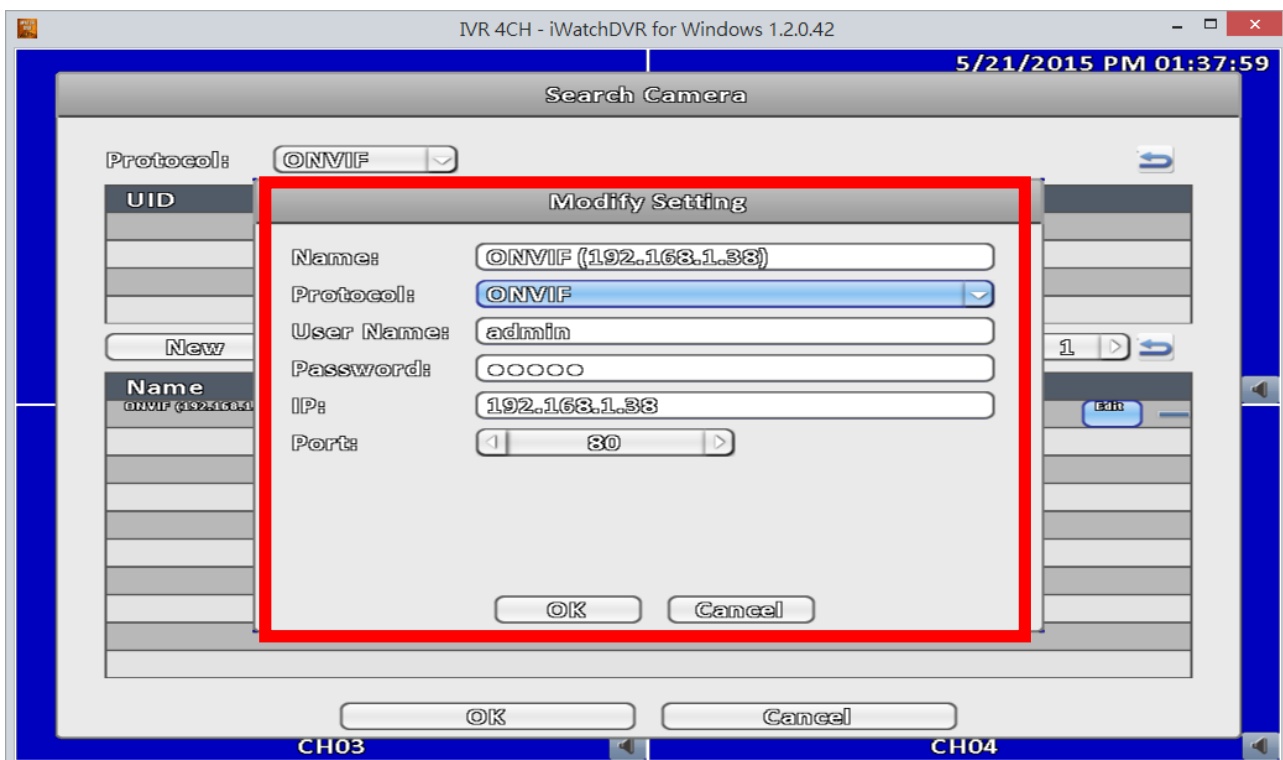
The selected IP Camera's information will be shown below, after being added successfully.



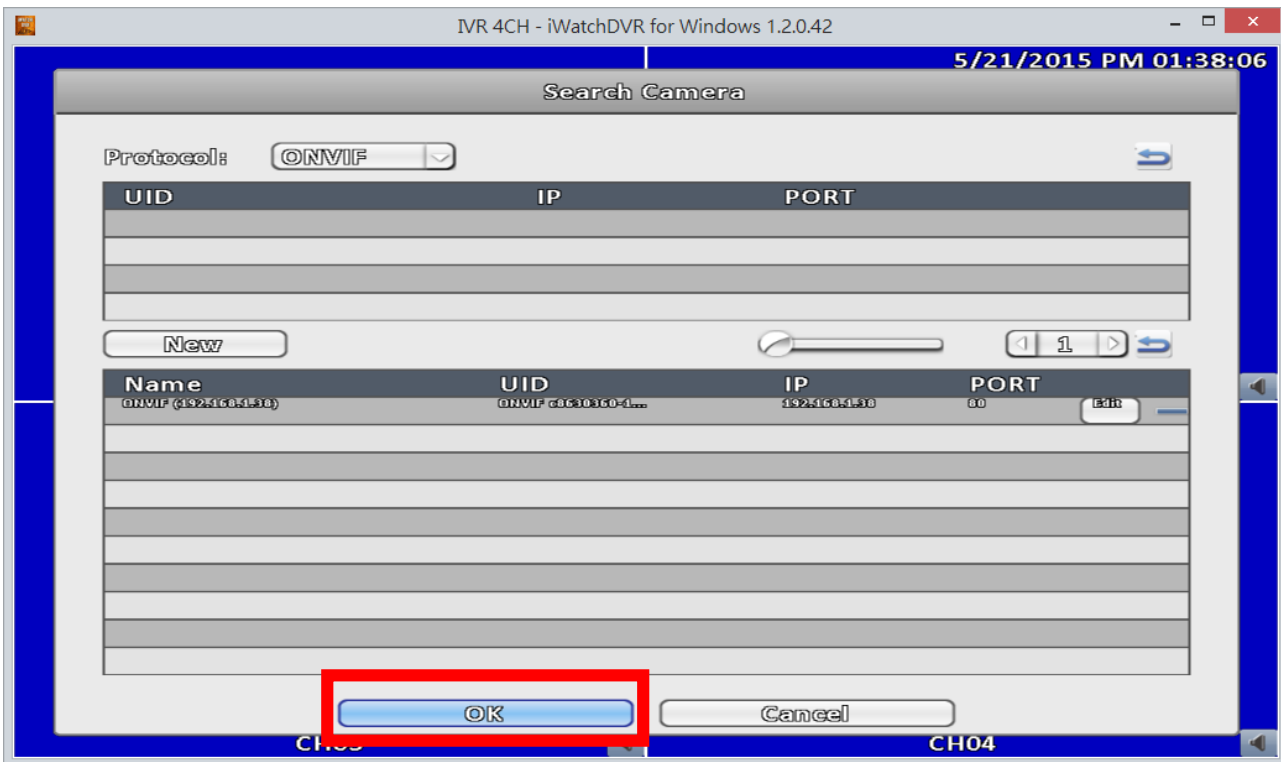
Click "Edit" to modify the setting if necessary.



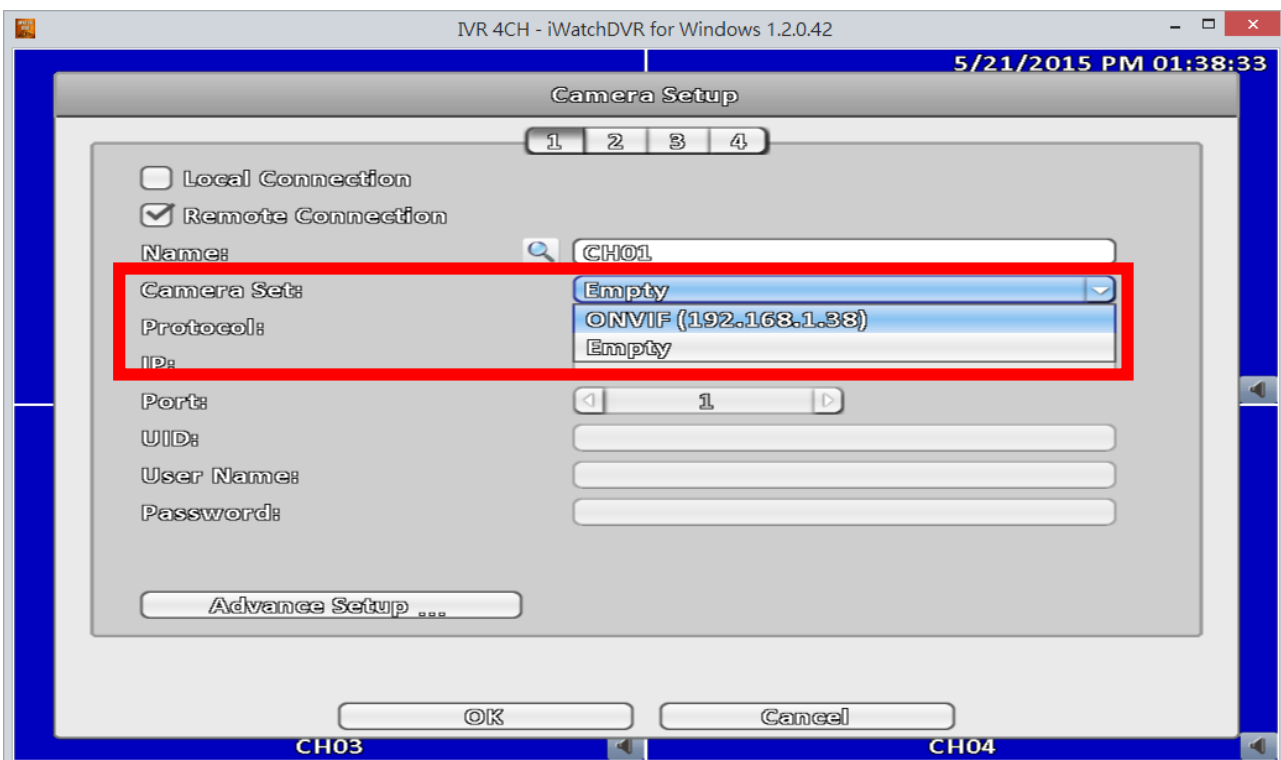
Modify the setting if necessary.



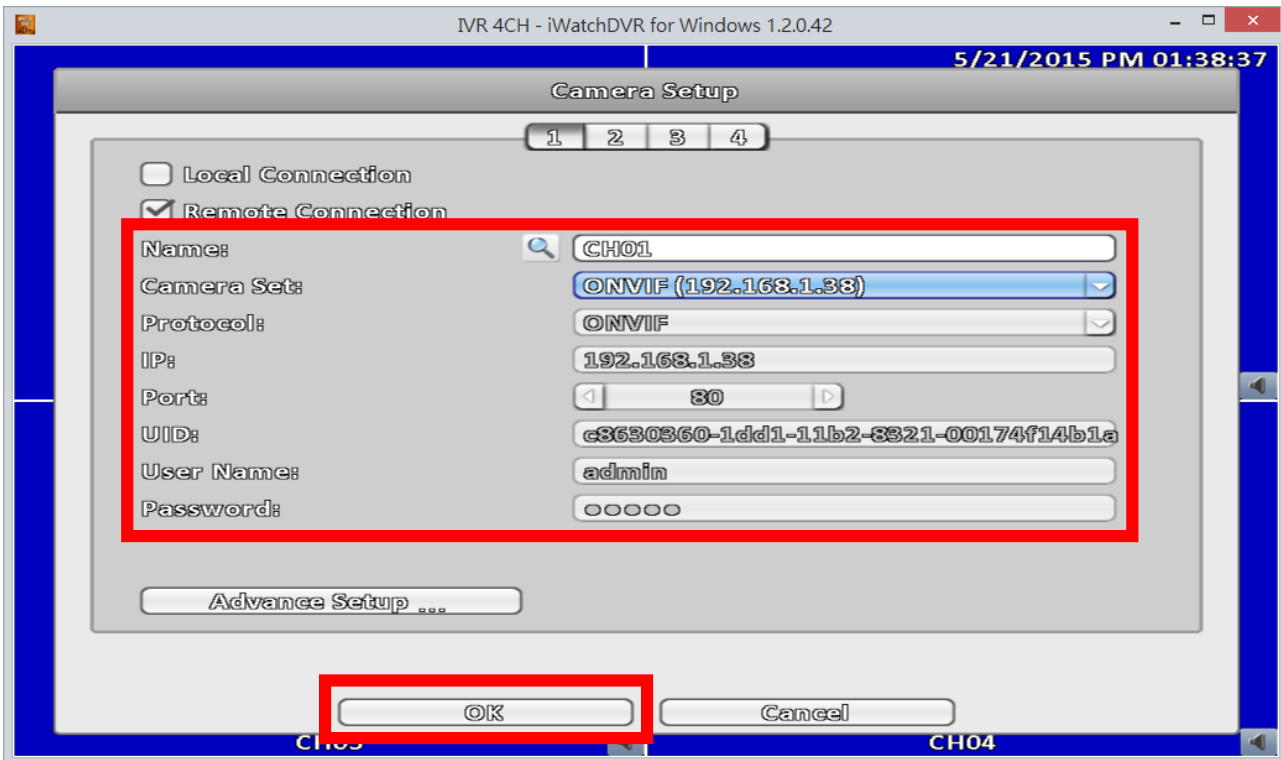
When all setting is done, click “OK” to go back to Camera Setup.



In Camera Setup, go to “Camera Set” to choose available video sources.



The selected IP Camera's information will be shown below.
Click "OK" to activate the setting.



The video from IP Camera is shown and recorded in DVR.
Available for Live View, Playback, and Backup.

